



THE RESORT

JEBEL ALI BEACH
DUBAI

FACTSHEET



ONE MILLION SQUARE METRES
OF UNIQUE MEMORABLE
EXPERIENCES

**JA The Resort is home to
three iconic hotels:**

JA Beach Hotel, JA Palm Tree Court
and JA Lake View Hotel.

The resort comprises an area of 1 million
square metres and has 25 restaurants
and over 40 experiences.



STAY



JA PALM TREE COURT

TRULY SERENE BEACHFRONT VILLA SUITES

212 suites

- **88 Garden View Junior Suites - 60m²**
Accommodates up to 2 adults, 2 children & 1 infant
- **36 Sea View Junior Suites - 60m²**
Accommodates up to 2 adults, 2 children & 1 infant
- **22 Garden Terrace Suites - 62m²**
Accommodates up to 2 adults, 2 children & 1 infant
- **22 Premium Garden Terrace Junior Suites - 62m²**
Accommodates up to 2 adults, 2 children & 1 infant
- **24 Beachfront Terrace Junior Suites - 62m²**
Accommodates up to 2 adults, 2 children & 1 infant
- **8 Sea View Residence Junior Suites - 60m²**
Accommodates up to 2 adults, 2 children & 1 infant
Enhanced residence benefits
- **6 Sea View One Bedroom Suites - 120m²**
Accommodates up to 2 adults, 3 children & 1 infant
Enhanced residence benefits
- **4 Beachfront Residence One Bedroom Suites - 124m²**
Accommodates up to 2 adults, 3 children & 1 infant
Enhanced residence benefits
- **2 Sea View Residence Two Bedroom Suites - 210m²**
Accommodates up to 4 adults, 3 children & 1 infant
Enhanced residence benefits



STAY



JA BEACH HOTEL

DUBAI'S FIRST RESORT

235 rooms & suites

- **169 Resort View and Sea View Rooms - 32m²**
Accommodates up to 2 adults and 1 child
- **27 Deluxe Sea View Rooms - 38m²**
Accommodates up to 2 adults and 1 child
- **15 Resort View Junior Suites - 64m²**
Accommodates up to 2 adults, 1 child & 1 infant
- **8 One Bedroom Suites - 64m²**
Accommodates up to 2 adults, 1 child & 1 infant
Premium lounge benefits
- **12 Two Sea View Connecting Rooms - 64m²**
Accommodates up to 2 adults, 2 children & 1 infant
- **4 Premium One Bedroom Suites - 122m²**
Accommodates up to 2 adults & 2 children
Premium lounge benefits



STAY



JA LAKE VIEW HOTEL

THE LIFESTYLE HUB OF THE RESORT

348 rooms & suites

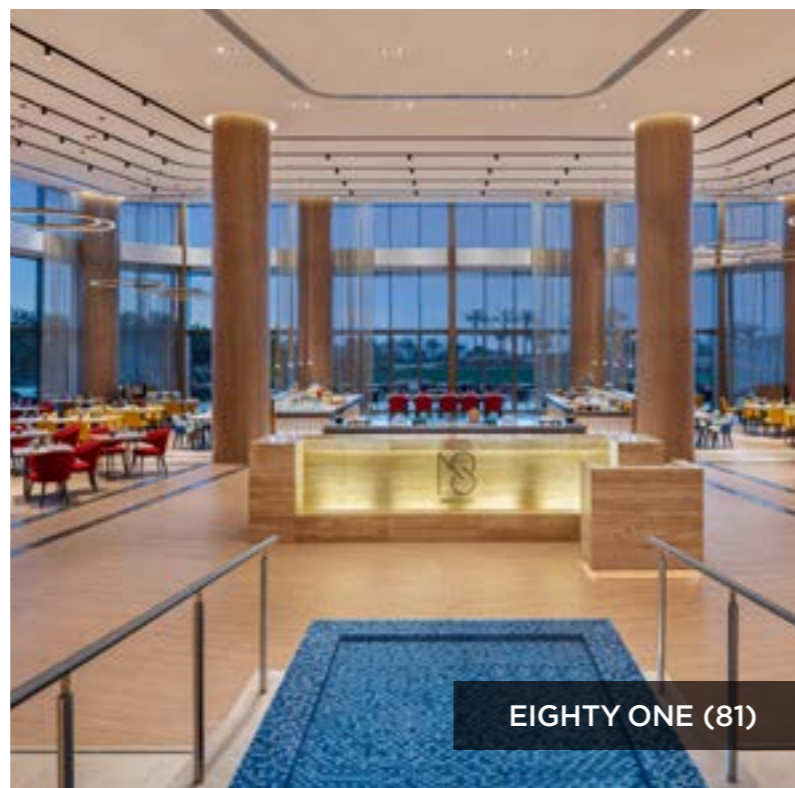
- **159 Deluxe Rooms – 40m²**
Accommodates up to 2 adults, 1 child & 1 infant
- **71 Resort Course View Rooms – 40m²**
Accommodates up to 2 adults, 1 child & 1 infant
- **57 Premium Resort Course View – 40m²**
Accommodates up to 2 adults, 1 child & 1 infant
- **10 Junior Suites – 70m²**
Accommodates up to 2 adults, 2 children & 1 infant
- **7 Resort Course One Bedroom Suites – 132m²**
Accommodates up to 2 adults, 2 children & 1 infant
- **18 One Bedroom Terrace Suites – 168m²**
Accommodates up to 2 adults, 2 children & 1 infant
- **4 One Bedroom Private Pool Suite – 168m²**
Accommodates up to 2 adults, 2 children & 1 infant
- **2 Two Bedroom Outdoor Jacuzzi Suites – 250m²**
Accommodates up to 4 adults, 2 children & 1 infant
- **20 Two Deluxe Connecting Rooms – 80m²**
Accommodates up to 2 adults, 2 children & 1 infant



EAT



REPUBLIK



EIGHTY ONE (81)

BRING OUT THE FOODIE IN YOU

25 restaurants & bars

ANCHOR RESTAURANT: JA Palm Tree Court
Poolside restaurant serving snacks and refreshments

ANCHOR POOL BAR: JA Palm Tree Court
Swim-up pool bar serving refreshments

LA FONTANA BRASSERIE: JA Palm Tree Court
International buffet restaurant and French provencal dinner

LA FONTANA POOL BAR: JA Palm Tree Court
Swim-up pool bar serving refreshments

TAMR POOL & TERRACE: JA Palm Tree Court
Al fresco terrace serving seasonal delicacies.
Exclusive for Palm Tree Court guests only

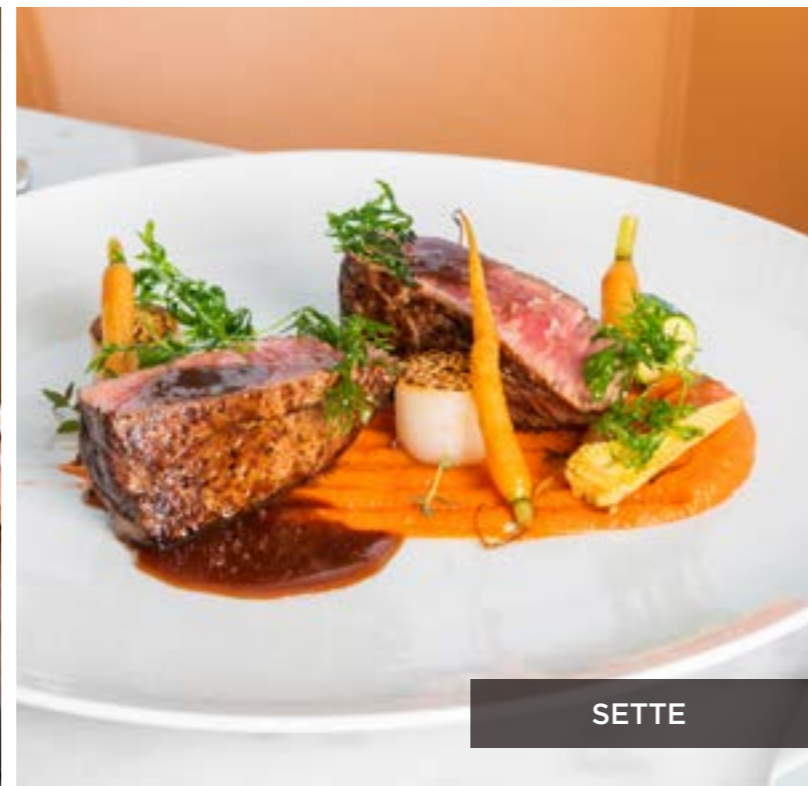
TAMR BAR: JA Palm Tree Court
Chic poolside bar serving snacks and refreshments.
Exclusive for Palm Tree Court guests only



EAT



KINARA



SETTE

BRING OUT THE FOODIE IN YOU

25 restaurants & bars

WHITE ORCHID RESTAURANT: JA Palm Tree Court
Contemporary South-East Asian cuisine

WHITE ORCHID LOUNGE: JA Palm Tree Court
Signature cocktails

EIGHTY ONE (81): JA Lake View Hotel
International buffet restaurant

KINARA BY VIKAS KHANNA: JA Lake View Hotel
Speciality Indian restaurant led by Michelin star chef Vikas Khanna

LAKESIDE CAFÉ: JA Lake View Hotel
Poolside snacks

LOBBY LOUNGE: JA Lake View Hotel
Selection of beverages

REPUBLIK: JA Lake View Hotel
Modern gastro pub



EAT



TAPERIA



VASCO DA GAMA

BRING OUT THE FOODIE IN YOU

25 restaurants & bars

THE VIBE: JA Lake View Hotel
Adults only poolside bar

CAPTAIN'S RESTAURANT & BAR: JA Beach Hotel
Beachfront Mediterranean cuisine with wood fired pizza

IBN MAJED: JA Beach Hotel
International buffet restaurant

OASIS LODGE: JA The Resort Golf Course
Refreshments and snacks on the golf course

PALMITO POOL BAR: JA Beach Hotel
Swim-up pool bar serving refreshments

SANDBAR: JA Beach Hotel
Beach bar with a sandy terrace serving refreshments

SETTE: JA Beach Hotel
Authentic Italian restaurant

SETTE LOUNGE: JA Beach Hotel
Signature Italian lounge serving pre and post dinner drinks



EAT



WHITE ORCHID



SMOKIN' GUN

BRING OUT THE FOODIE IN YOU

25 restaurants & bars

SIGNATURE LOUNGE: JA Beach Hotel

Exclusive lounge overlooking Signature Pool serving refreshments and snacks

SUNRISE LOUNGE: JA Lake View Hotel

Tea lounge overlooking the beach and gardens

SUNSET LOUNGE: JA Beach Hotel

Tea lounge overlooking the beach and gardens

SMOKIN' GUN: JA Shooting Club

Over-the-top burgers and top-notch shakes

SPORTS CAFÉ: Club Jumana

European pub grub overlooking JA Marina

STABLES COFFEE STOP: JA Equestrian Centre

Refreshments and snacks at JA Equestrian Centre

TAPERIA: JA Beach Hotel

Tapas Restaurant with Traditional Spanish Favourites

VASCO DA GAMA: JA Beach Hotel

Ideal place for drinks and live entertainment



PLAY



THERE IS FUN,

- Just Splash splash park and splash pad
- 800 metres of private beach
- 8 temperature-controlled swimming pools with swim-up bars
- 9-hole, par 35, championship standard golf course with floodlit driving range, par 3 course, putting and pitching greens
- The Leadbetter Golf Academy Dubai, the first academy in the Middle East offering a holistic approach to golf instruction
- Horse riding stables with instructors
- 4 floodlit tennis courts, squash court and badminton court
- Beach volleyball facilities
- 9-hole mini-golf course
- JA Shooting Club features international standard indoor and outdoor shooting
- 2 Padel tennis courts
- Aviaries with bird shows
- Calm Spa & Salon offering over 40 rejuvenating treatments and services
- Animal Discovery Zone



PLAY



AND THERE IS MORE FUN

- Private 100-berth full-service marina
- Speciality shops
- Bio-garden with greenhouses for fresh herbs & vegetables
- Watersports centre providing kayaking, SUP boarding, wakeboarding and wakesurfing
- Zumba classes
- Beach volleyball
- Football tournaments
- Billiard games
- Darts tournaments
- Table tennis

FOR THE LITTLE ONES

- 3 temperature-controlled children's and toddlers' pools
- Crèche (4 months to 23 months)
- Pirates & Mermaids Kids Club (4 years to 12 years)
- Babysitting service available on request
- Kids cooking classes
- Family movie nights
- Kids disco nights



RESTAURANTS & BARS

- 1 Anchor Restaurant & Bar
- 2 Captain's Restaurant & Bar
- 3 Sunrise Lounge
- 4 81
- 5 Vibe Bar
- 6 Ibn Majed
- 7 Sette
- 8 Sette Lounge
- 9 Kinara by Vikas Khanna
- 10 La Fontana Brasserie
- 11 La Fontana Pool Bar
- 12 Lakeside Café
- 13 Vasco Da Gama
- 14 Oasis Lodge
- 15 Palmito Pool Bar
- 16 Republik
- 17 Smokin' Gun
- 18 Sports Café
- 19 Stables Coffee Stop
- 20 Sunset Lounge
- 21 Taperia
- 22 White Orchid Restaurant
- 23 White Orchid Lounge
- 24 Soul Beach
- 25 Sandbar
- 26 Tamr Terrace
- 27 Tamr Pool & Bar
- 28 Bibe Rooftop Lounge
- 29 JA Splash Pool Bar

EXPERIENCES

- 1 JA Marina
- 2 JA The Resort Golf Course & JA Golf Academy
- 3 JA Equestrian Centre
- 4 JA Sports Centre & JA Shooting Club (archery, football, cricket, rugby, paintballing) - 3 min drive from the Resort)
- 5 Signature Pool
- 6 La Fontana Pool
- 7 Anchor Pool
- 8 Palmito Pool
- 9 Main Beach
- 10 Watersports Centre
- 11 Signature Lounge
- 12 Calm Spa & Salon
- 13 Mini Golf
- 14 Kids Playground
- 15 Beach Volleyball
- 16 Pirates & Mermaids Kids Club
- 17 Just Splash splash park
- 18 Just Splash splash pad
- 19 Club Jumana (gym, squash, badminton, table tennis)
- 20 Tennis Courts + Padel Tennis Courts
- 21 Bio Garden
- 22 Bird Aviaries
- 23 Animal Discovery Zone
- 24 JA Splash Pool

BUGGY STOPS

- 1 JA Lake View Hotel
- 4 JA Beach Hotel
- 2 JA Equestrian Centre
- 5 Pool & Beach Entrance
- 3 JA Palm Tree Court
- 6 Club Jumana

HOTELS & ACCOMODATION

- 1 JA Palm Tree Court Villa 1
- 2 JA Palm Tree Court Villa 2
- 3 JA Palm Tree Court Villa 3
- 4 JA Palm Tree Court Villa 4
- 5 JA Palm Tree Court Villa 5
- 6 JA Palm Tree Court Villa 6
- 7 JA Palm Tree Court Villa 7
- 8 JA Palm Tree Court Villa 8
- 9 The Residence Suites Villa 9
- 10 JA Palm Tree Court Villa 10
- 11 JA Palm Tree Court Lobby
- 12 JA The Resort Entrance
- 13 JA Beach Hotel
- 14 JA Lake View Hotel

FACILITIES

- 1 Guest Transportation Path
- 2 Walking Track
- 3 Shopping Arcade
- 4 Conference Centre
- 5 Library
- 6 Mosque
- 7 Car Park
- 8 Palmito Garden
- 9 Amphitheatre
- 10 Croquet Lawn

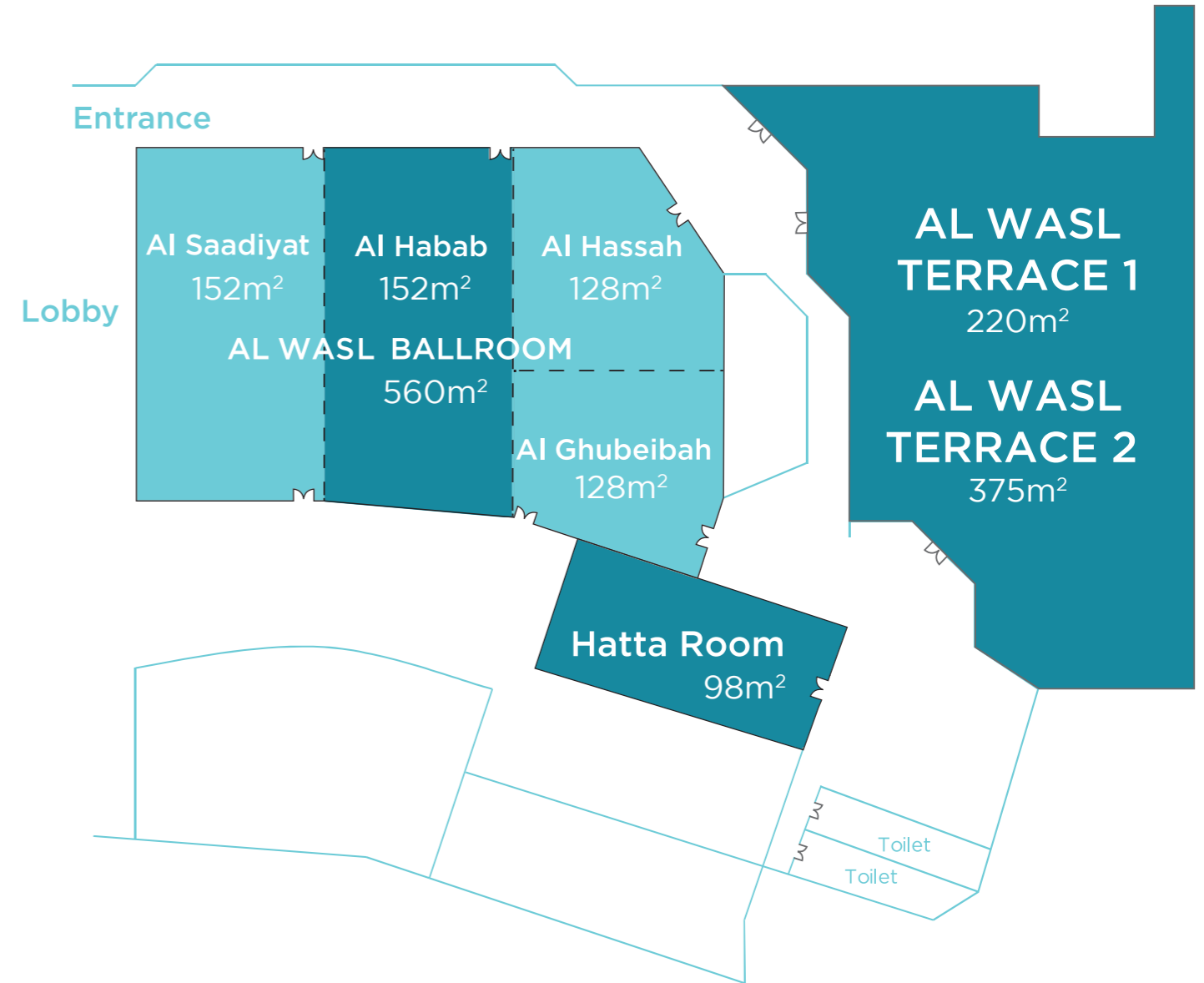
THE PURSUIT OF DIFFERENTIATION

VENUES

- Dividable meeting spaces
- Separate entrance to conference centre
- Advanced audio visual technology
- Spacious outside terrace
- Free Wi-Fi in public areas & all meeting rooms
- Valet parking

JA BEACH HOTEL

INDOOR VENUES	WIDTH METERS	LENGTH METERS	HEIGHT METERS	SQUARE METRES	THEATRE	U-SHAPE	CLASSROOM	CABARET	BOARDROOM	BANQUET	RECEPTION
Al Saadiyat	10	15	3.5	152	140	24	30	35	24	50	180
Al Habab	10	15	3.5	152	140	24	30	35	24	50	180
Al Hassah	9	14	3.5	128	60	14	20	28	14	40	100
Al Ghubeiba	9	14	3.5	128	80	20	40	35	20	50	100
Hatta Room	7	14	2.5	98	50	18	25	21	20	30	60
Al Saadiyat & Habab	20	15	3.5	300	360	80	150	35	90	160	420
Al Hassah & Ghubeiba	9	28	3.5	252	200	60	90	98	70	120	300
Al Hassah & Ghubeiba & Habab	19	15	3.5	285	380	120	180	161	100	230	475
Al Wasl	28	20	3.5	560	600	100	180	224	100	320	750
OUTDOOR VENUES	WIDTH METERS	LENGTH METERS	HEIGHT METERS	SQUARE METRES	THEATRE	U-SHAPE	CLASSROOM	CABARET	BOARDROOM	BANQUET	RECEPTION
Al Wasl Terrace 1	11	20	-	220	-	-	-	-	-	80	200
Al Wasl Terrace 2	25	15	-	375	-	-	-	-	-	140	300
Croquet Lawn	15	35	-	525	-	-	-	-	-	350	650
Palmito Garden	25	50	-	1250	-	-	-	-	-	800	1500
Amphitheater	9	9	-	81	-	-	-	-	-	-	120
Soul Beach	40	40	-	1600	-	-	-	-	-	1000	1800



VENUES

- State of the art meeting rooms
- Natural daylight
- Modern design
- Wi-Fi in public areas and all rooms
- Valet parking available

JA LAKE VIEW HOTEL

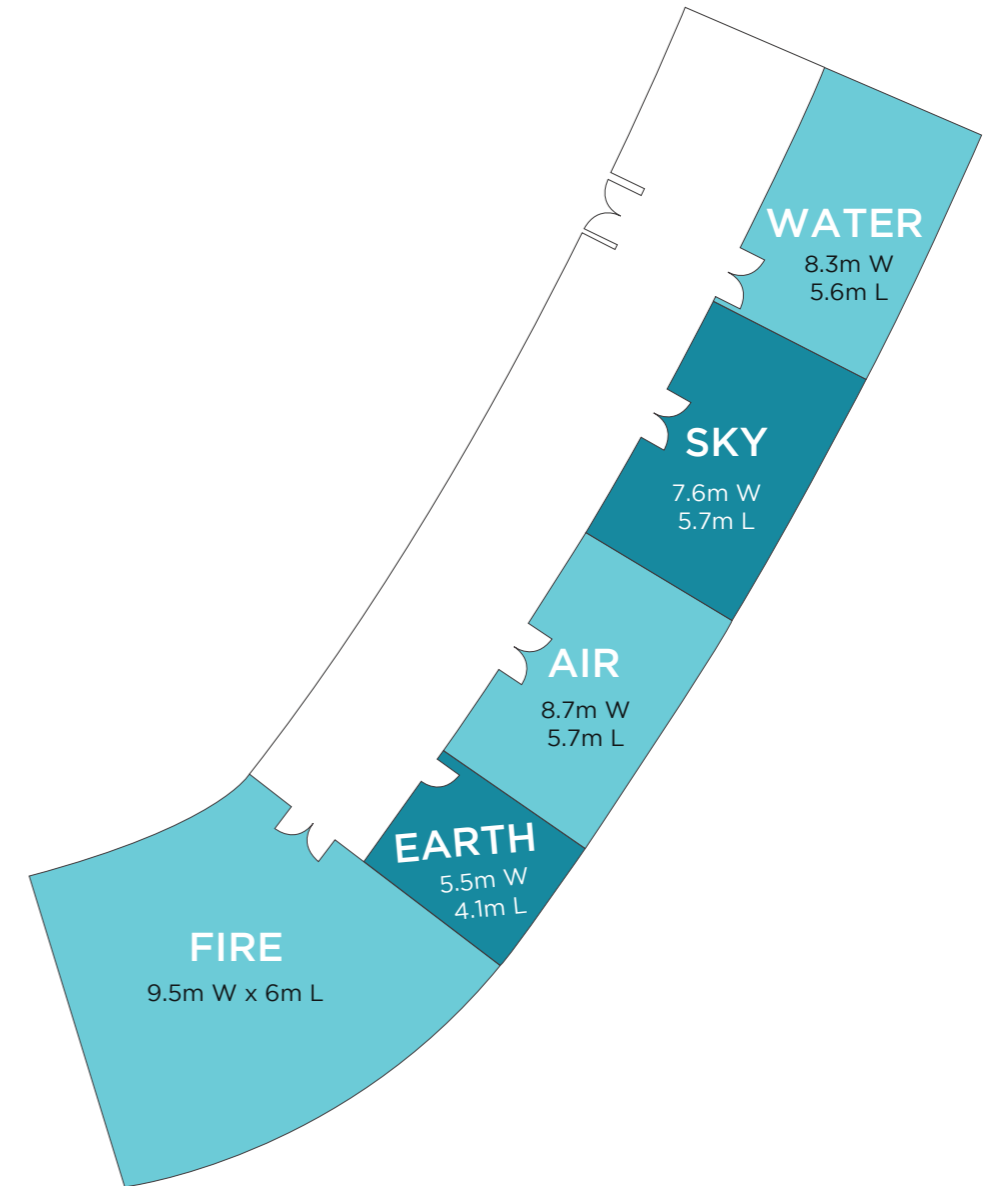
INDOOR VENUES MEETING ROOMS	SQUARE FEET	SQUARE METRES	THEATRE	U-SHAPE	CLASSROOM	CABARET	BOARDROOM	BANQUET	RECEPTION
Air	517	48	48	16	16	-	16	-	50
Sky	517	48	48	16	16	-	16	-	60
Water	517	48	-	-	-	-	16	-	60
Earth	258	24	24	0	12	40	12	-	-
Fire	1195	111	80	30	50	-	30	-	120

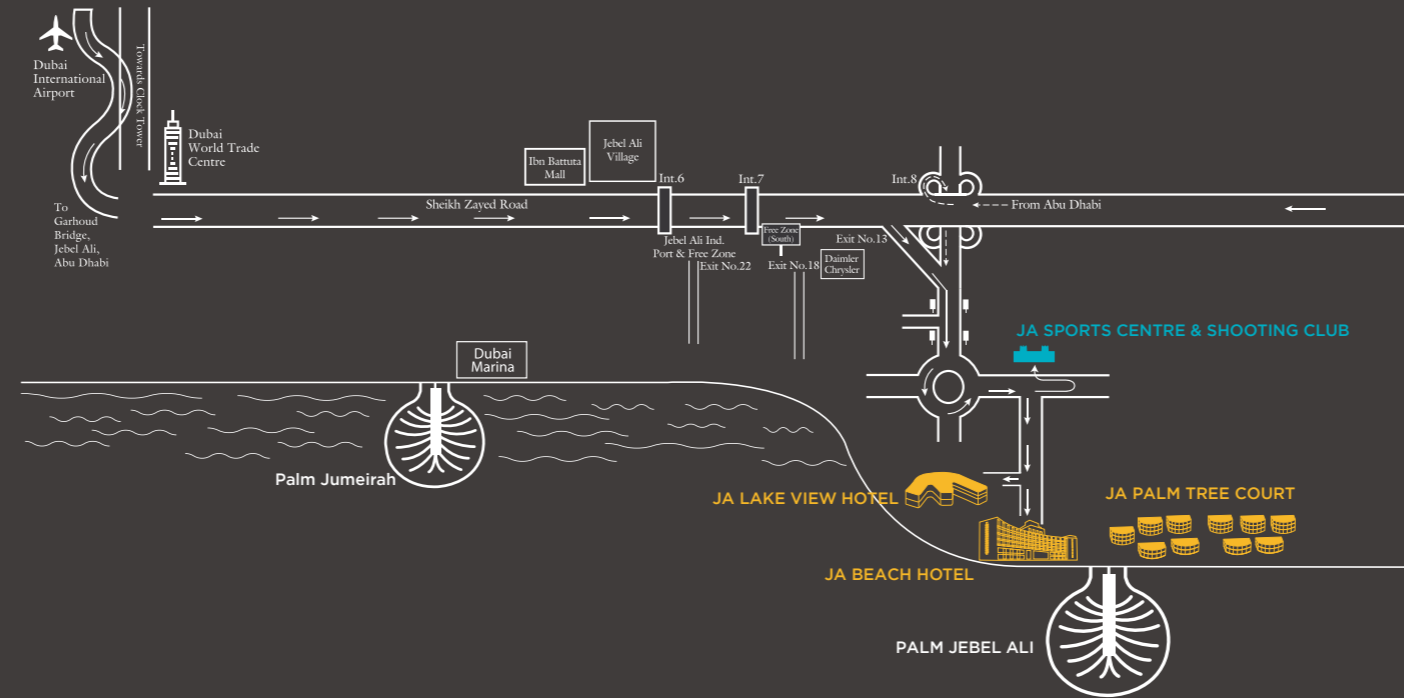
OUTDOOR VENUES EVENT AREAS

Events lawn								80	120
-------------	--	--	--	--	--	--	--	----	-----

EVENTS AT BIBÉ

Bibé Rooftop Lounge offers a breathtakingly panoramic view of JA The Resort Golf Course, designed by the famous Peter Harradine. This uniquely contemporary and elegant rooftop venue is a great option for intimate VIP functions and socials.





FROM DUBAI INTERNATIONAL AIRPORT

Follow the Jebel Ali/Abu Dhabi signboards from the airport until you reach Sheikh Zayed Road. Continue straight for approximately 40km, and take Exit No. 13, which will direct you to the Jebel Ali Free Zone (JAFZ) towards gates 7, 8 and 9, and keep right.

Remain on this road and proceed through the traffic light intersection until you approach the initial roundabout, and turn left. JA Sports Centre & Shooting Club will be on your left. Take the exit to the right which has the JA The Resort sign.

For access to JA Lake View Hotel, Club Jumana and JA Beach Club, take the right turn before you reach the hotel's main entrance. For access to JA Beach Hotel and JA Palm Tree Court, continue straight until you reach the roundabout and the resort's entrance will be on the right.

FROM ABU DHABI

When driving from Abu Dhabi, exit onto Interchange 8 and follow the slip road on the right heading towards the Jebel Ali Free Zone (JAFZA) gates 7 and 8.

Continue on this road and proceed through the traffic light intersection until you approach the initial roundabout, and turn left. JA Sports Centre & Shooting Club will be on your left. Take the exit to the right which has the JA The Resort sign.


For access to JA Lake View Hotel, Club Jumana and JA Beach Club, take the right turn before you reach the hotel's main entrance. For access to JA Beach Hotel and JA Palm Tree Court, continue straight until you reach the roundabout and the resort's entrance will be on the right.




Address: P.O.Box 9255, JA The Resort, Exit 13, Sheikh Zayed Road, Jebel Ali, Dubai, UAE

For more information, get in touch with us on +971 4 814 5555
or reservations.jatheresort@jaresorts.com

JAresorts.com

 [JAtheresort](#)

 [JAtheresort](#)